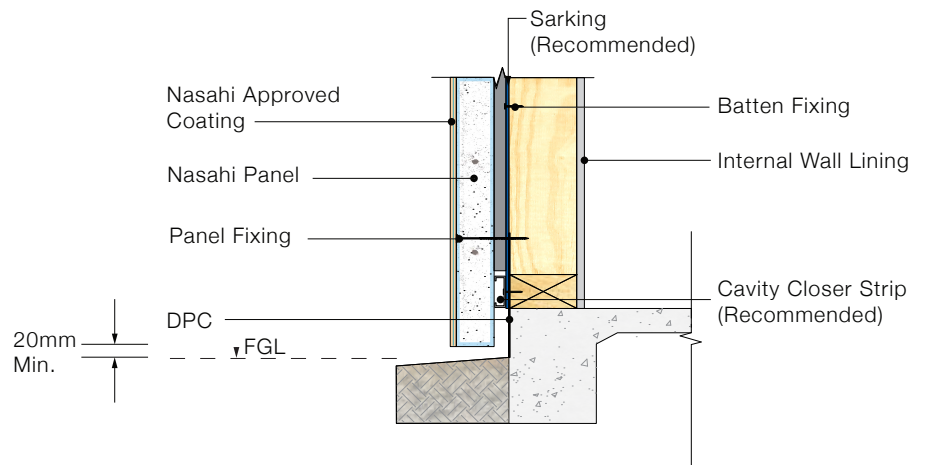
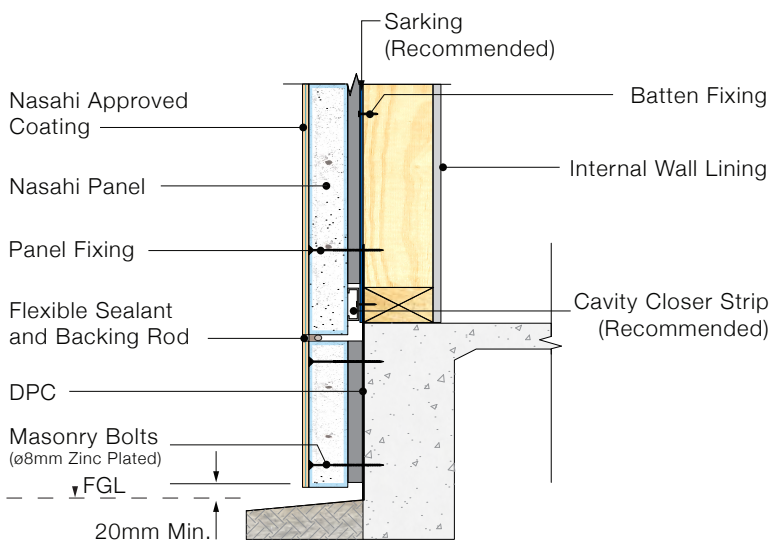


Slab Edge Detail
(Rebate)

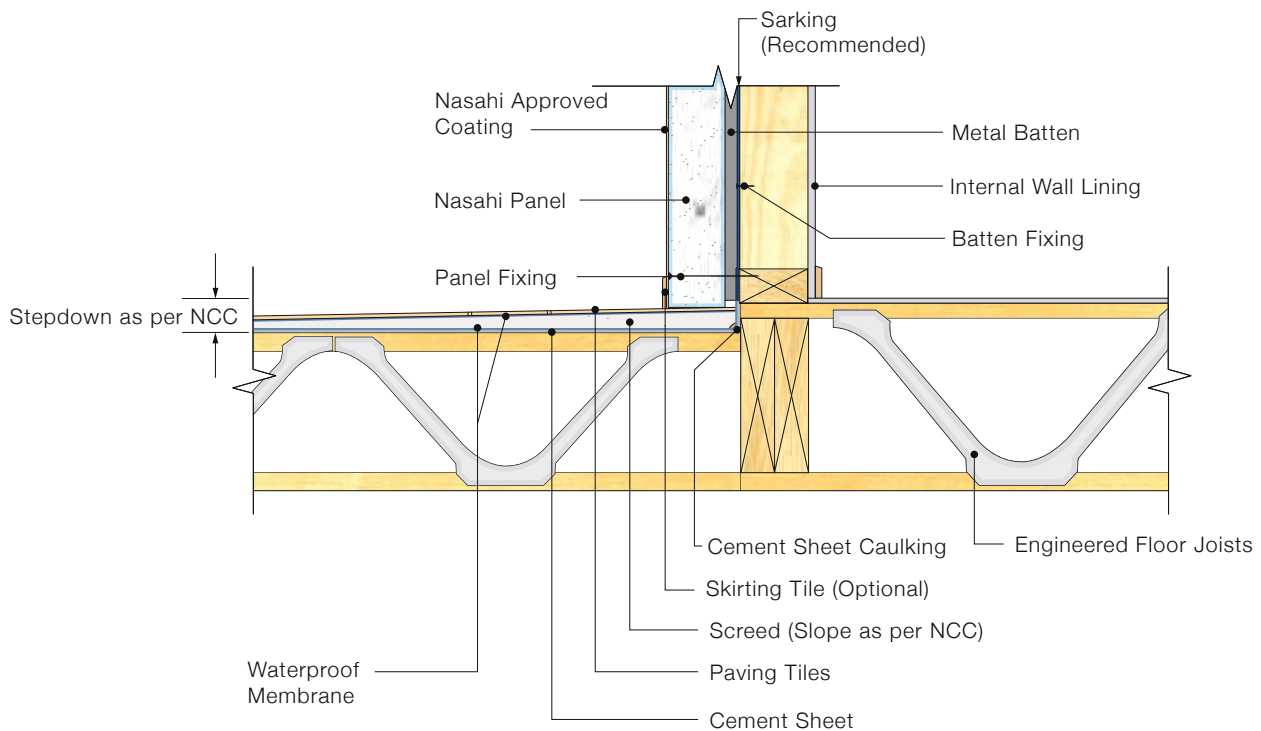


Slab Edge Detail
(Overhanging)

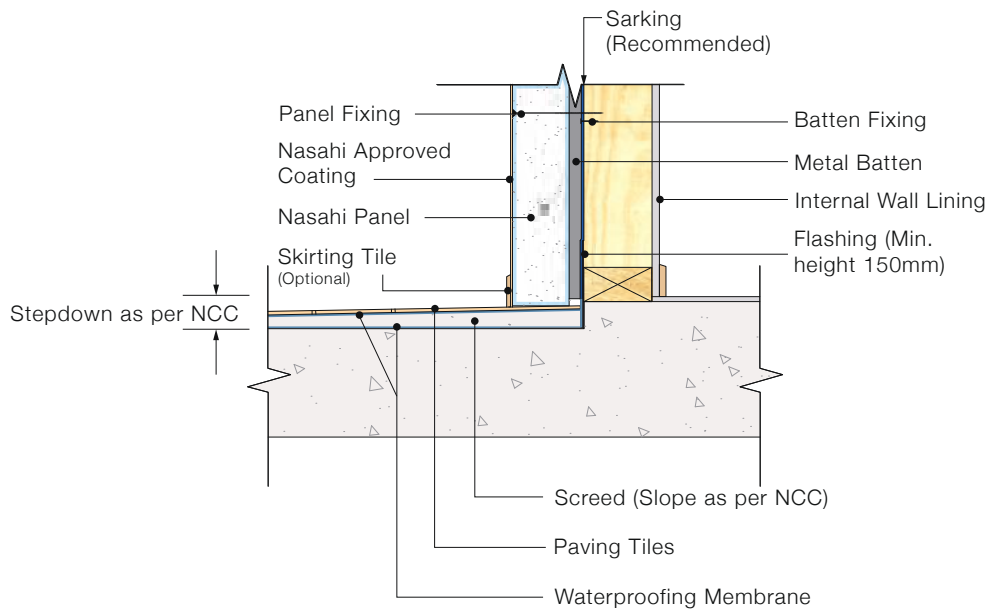


Slab Edge Detail
(Overhanging Deepened Edge Beam)



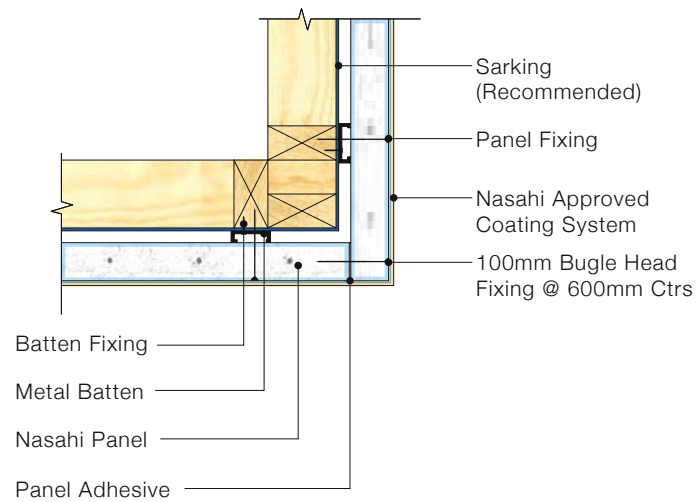


DETAIL 1.4 - Balcony Detail (Timber Frame)

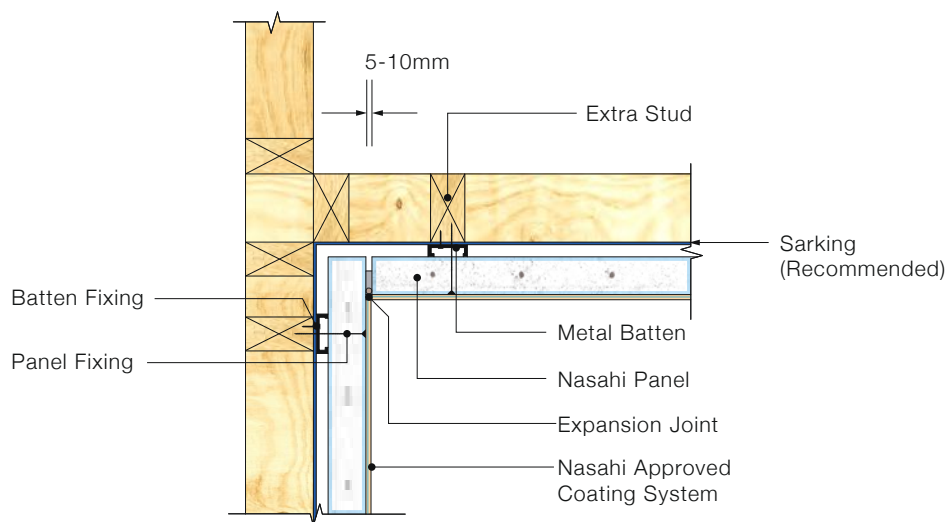


DETAIL 1.5 - Balcony Detail (Concrete Slab)





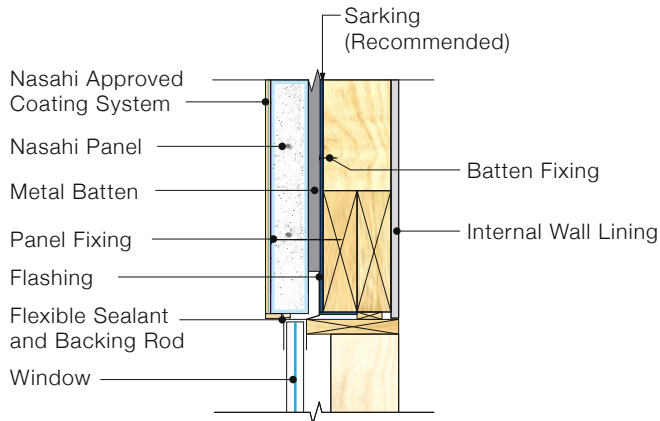
DETAIL 2.1 - External Corner Detail



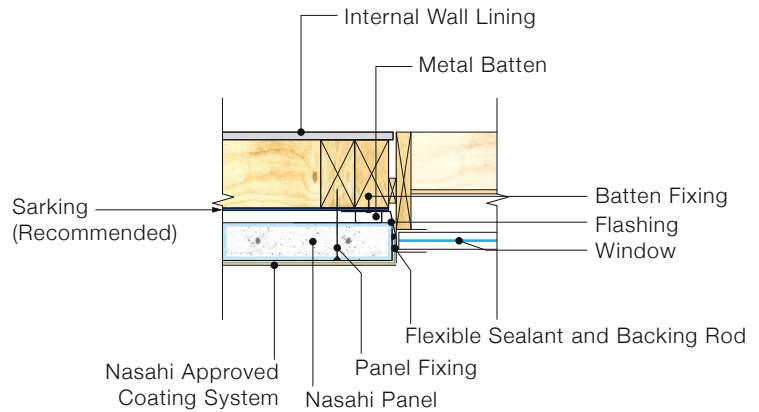
*NOTE: Internal corners require an extra stud for panel attachment 150mm back from the internal corner.

DETAIL 2.2 - Internal Corner Detail

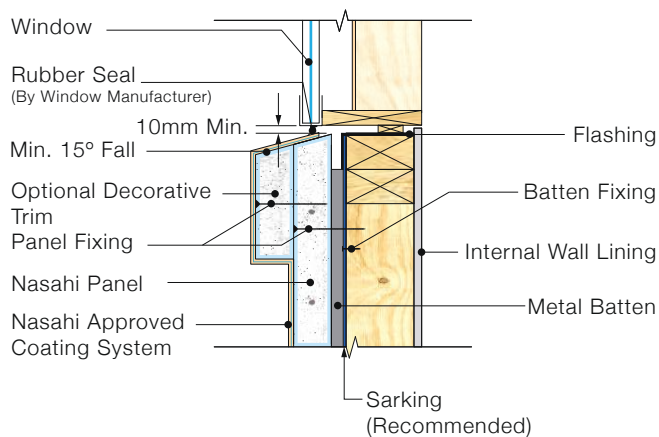




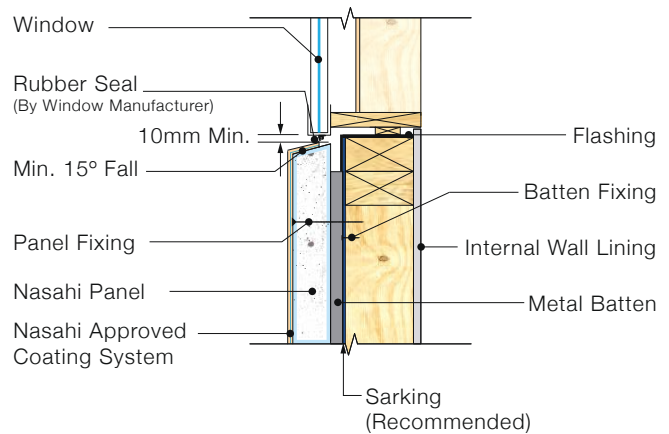
DETAIL 3.1 - Window Head



DETAIL 3.2 - Window Jamb

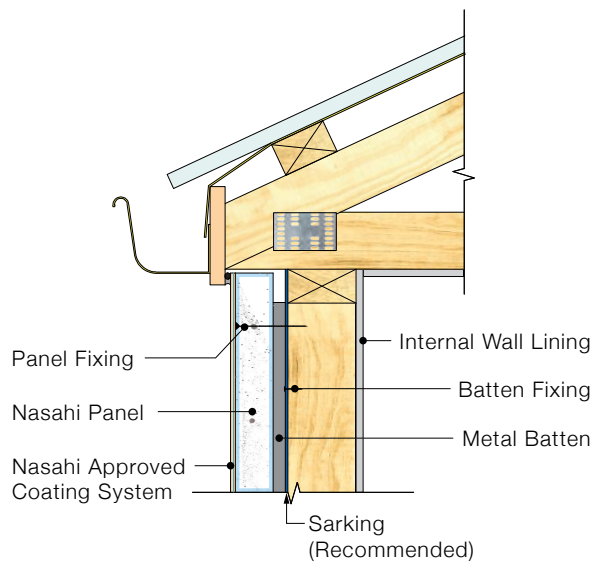


DETAIL 3.3 - Window Sill
(Decorative Trim)

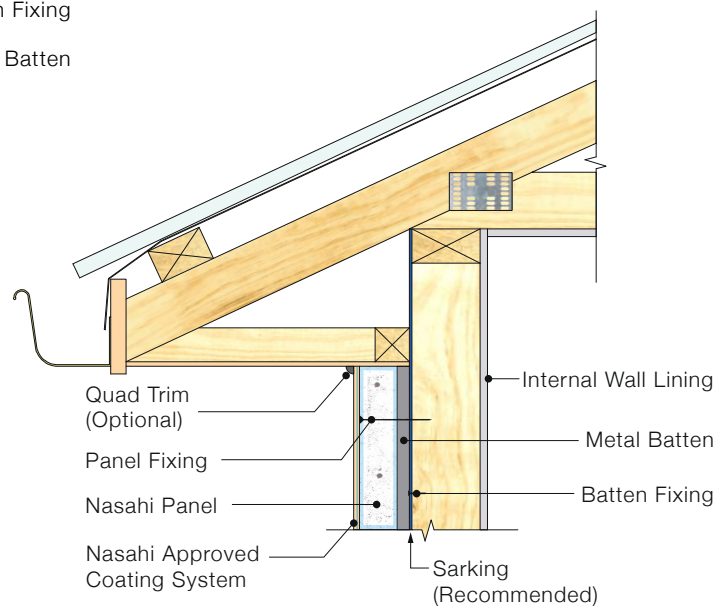


DETAIL 3.4 - Window Sill

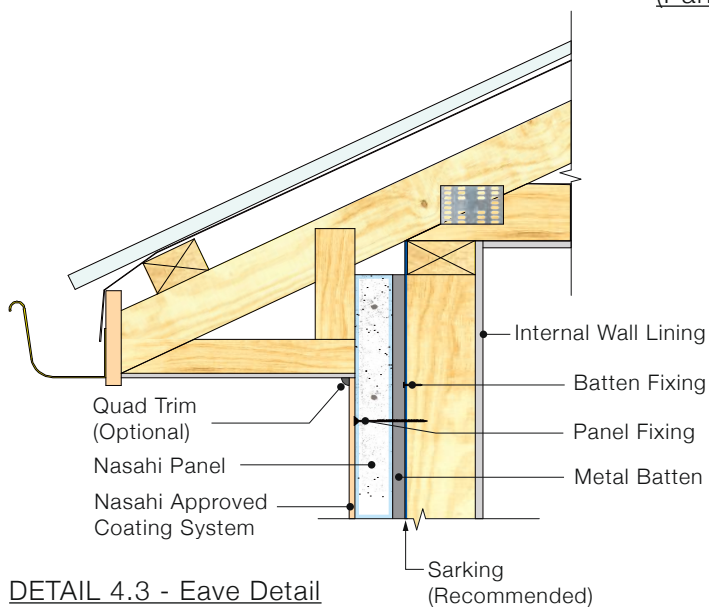




DETAIL 4.1 - Flush Eave

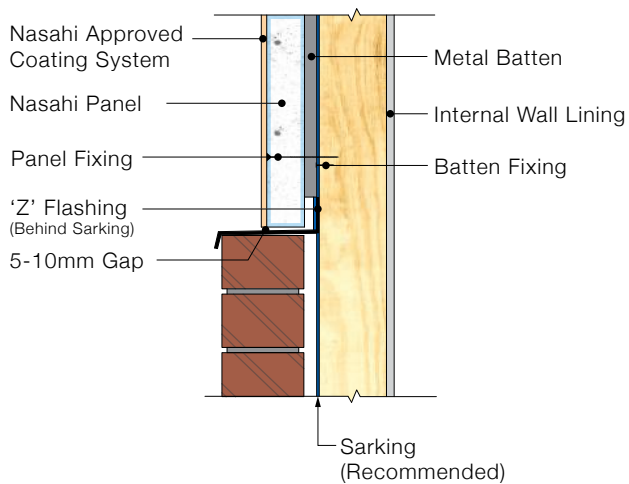


DETAIL 4.2 - Eave Detail
(Panel Under)

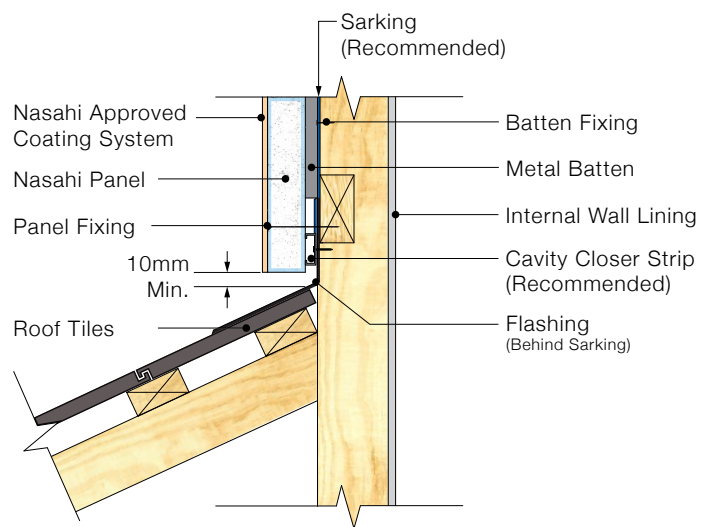


DETAIL 4.3 - Eave Detail
(Panel Flush With Lining)

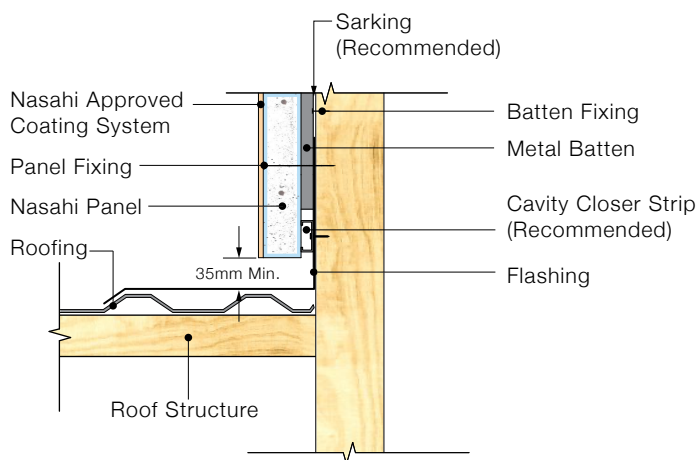




DETAIL 5.1 - Cladding To Brick Detail

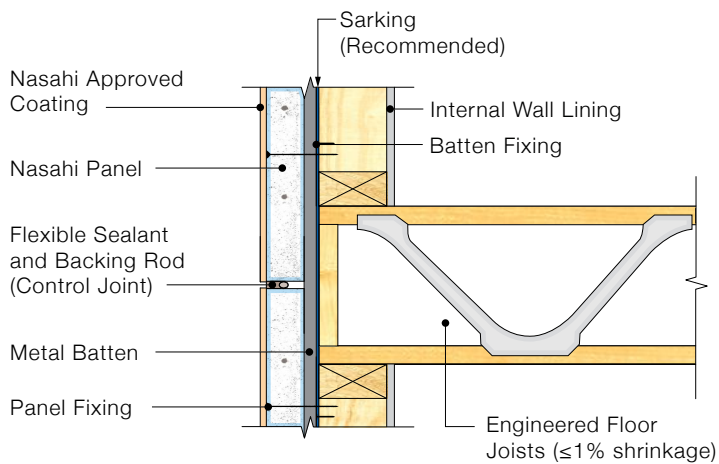


DETAIL 5.2 - Panel to Angle Roof Detail (Up to 25°)



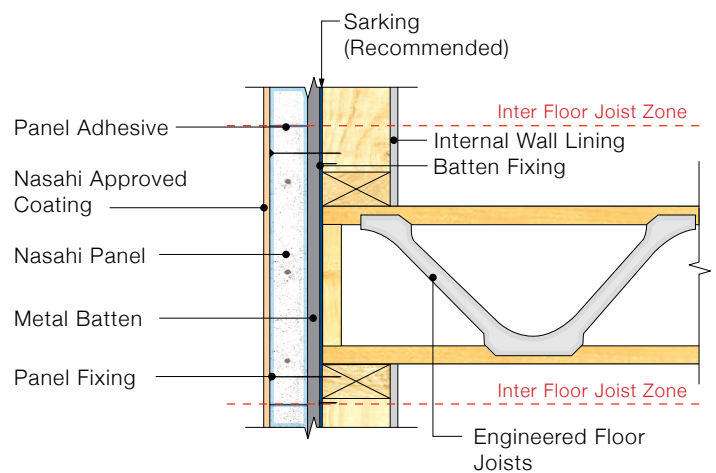
DETAIL 5.3 - Panel to Flat Roof Detail





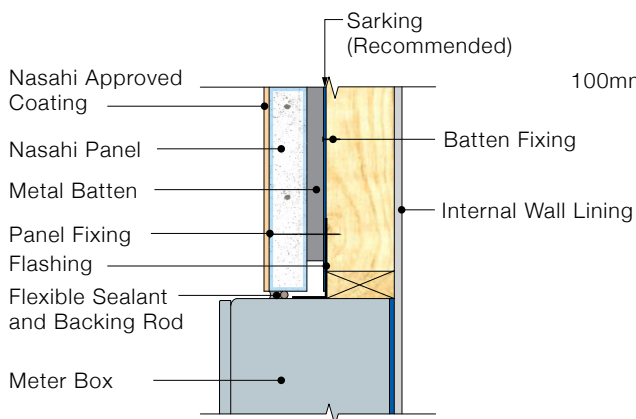
DETAIL 6.1 - Inter Floor Junction
(Panel Joint in Joist Zone)

Note: For engineered floor joists, shrinkage $\leq 1\%$ over depth of joist panel gap of 5-10mm is acceptable. For non-engineered floor joists, panel gap of 15-20mm is required.

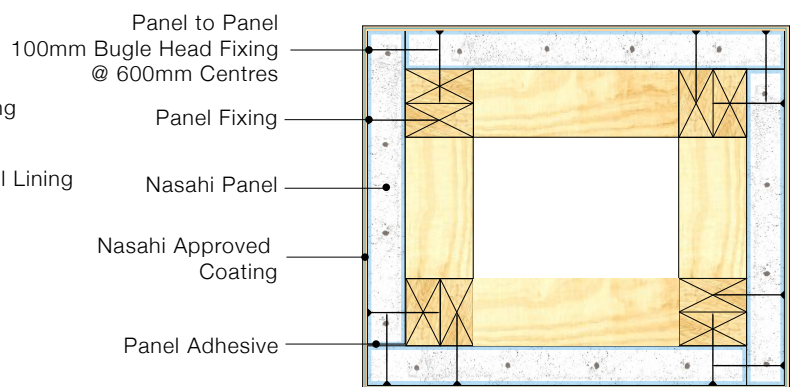


Note: To avoid control joint the joist must close within 600mm panel Inter Floor Joist Zone

DETAIL 6.2 - Inter Floor Junction
(No Panel Joint in Joist Zone)

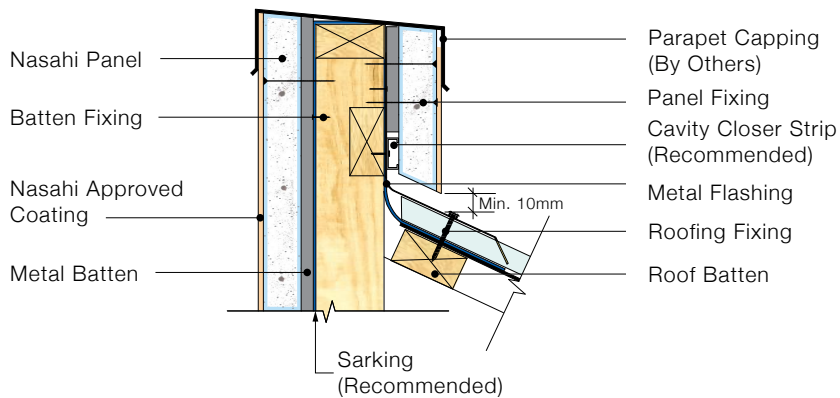


DETAIL 7.1 - Meter Box Installation

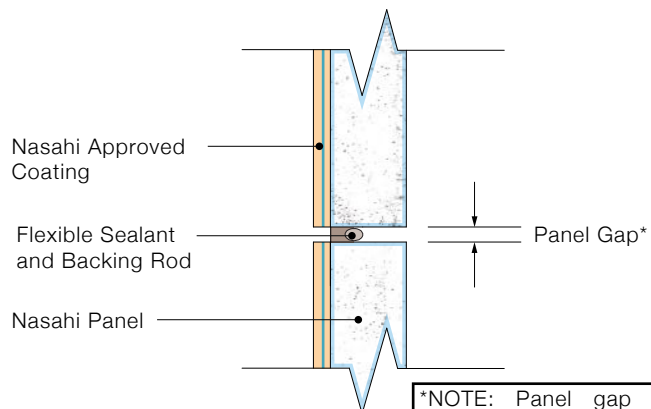


DETAIL 8.1 - Column Detail

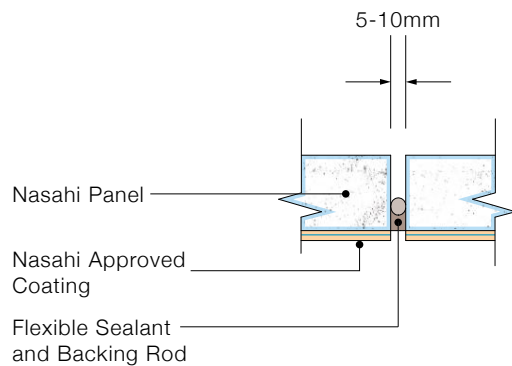




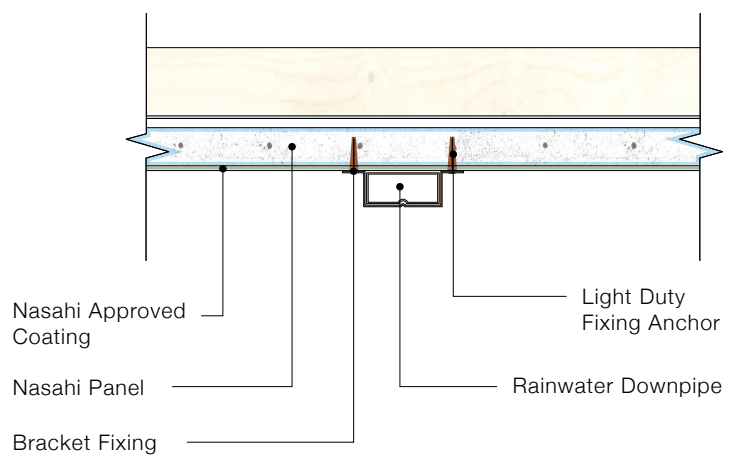
DETAIL 9.1 - Parapet Detail



DETAIL 10.1 - Expansion Joint (Horizontal)

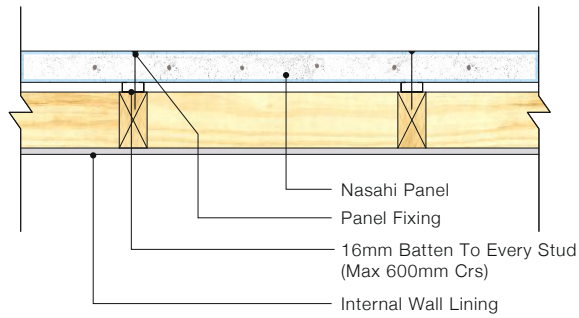


DETAIL 10.2 - Expansion Joint (Vertical)



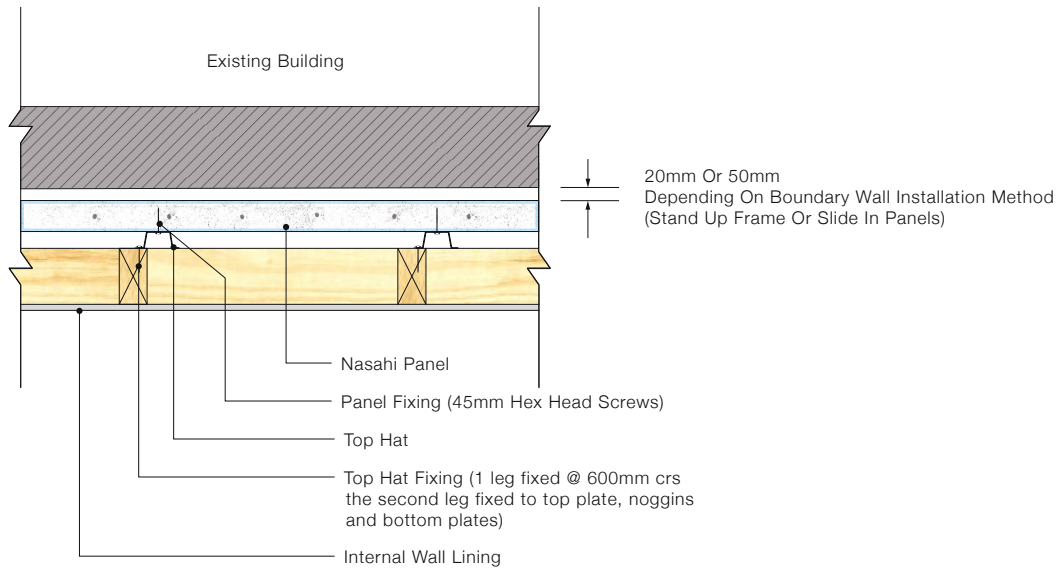
DETAIL 11.1 - External Fixings to Wall





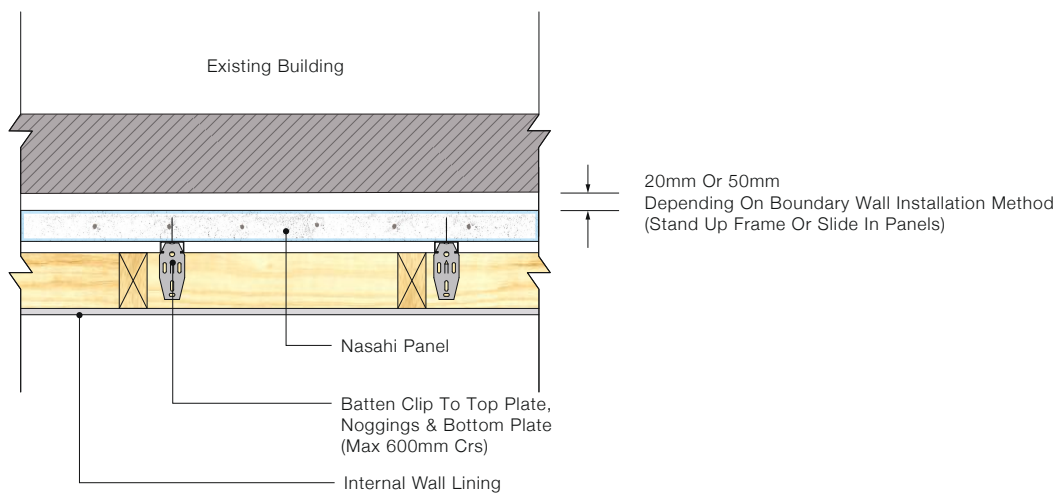
To Be Used Where External Access To Wall Is Available

DETAIL 12.1 - Standard External Wall Detail



To Be Used Where External Access To Wall Is Not Available

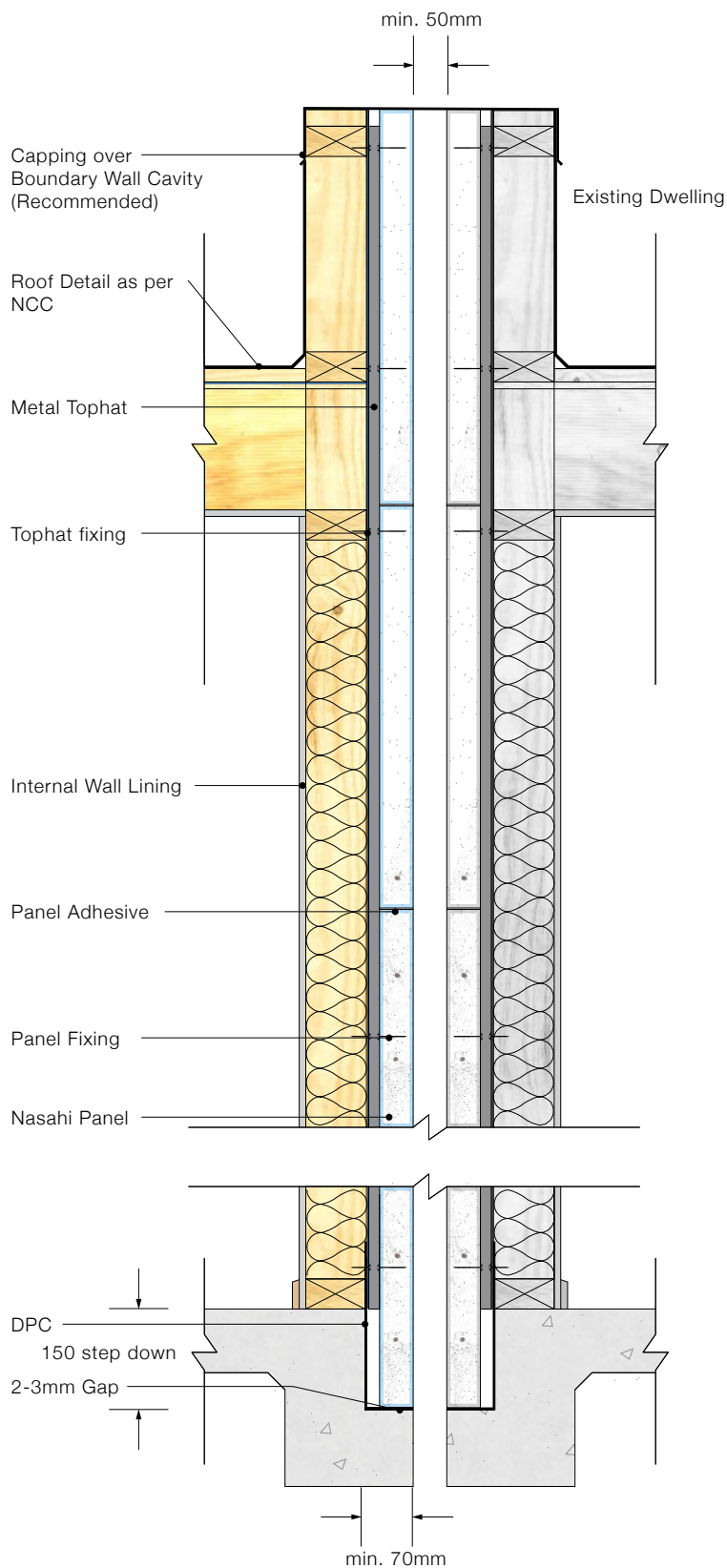
DETAIL 12.2 - Boundary Wall Fixing Detail A



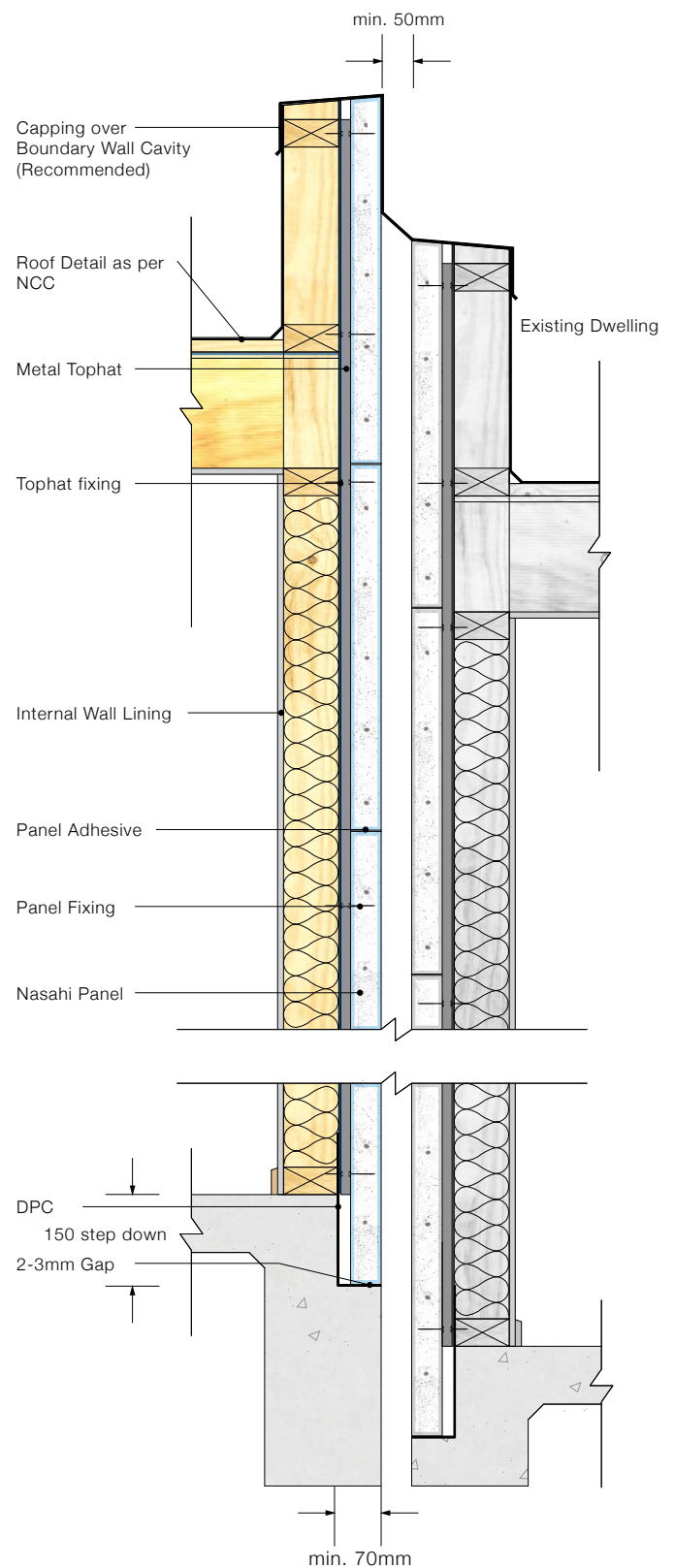
To Be Used Where External Access To Wall Is Not Available

DETAIL 12.3 - Boundary Wall Fixing Detail B



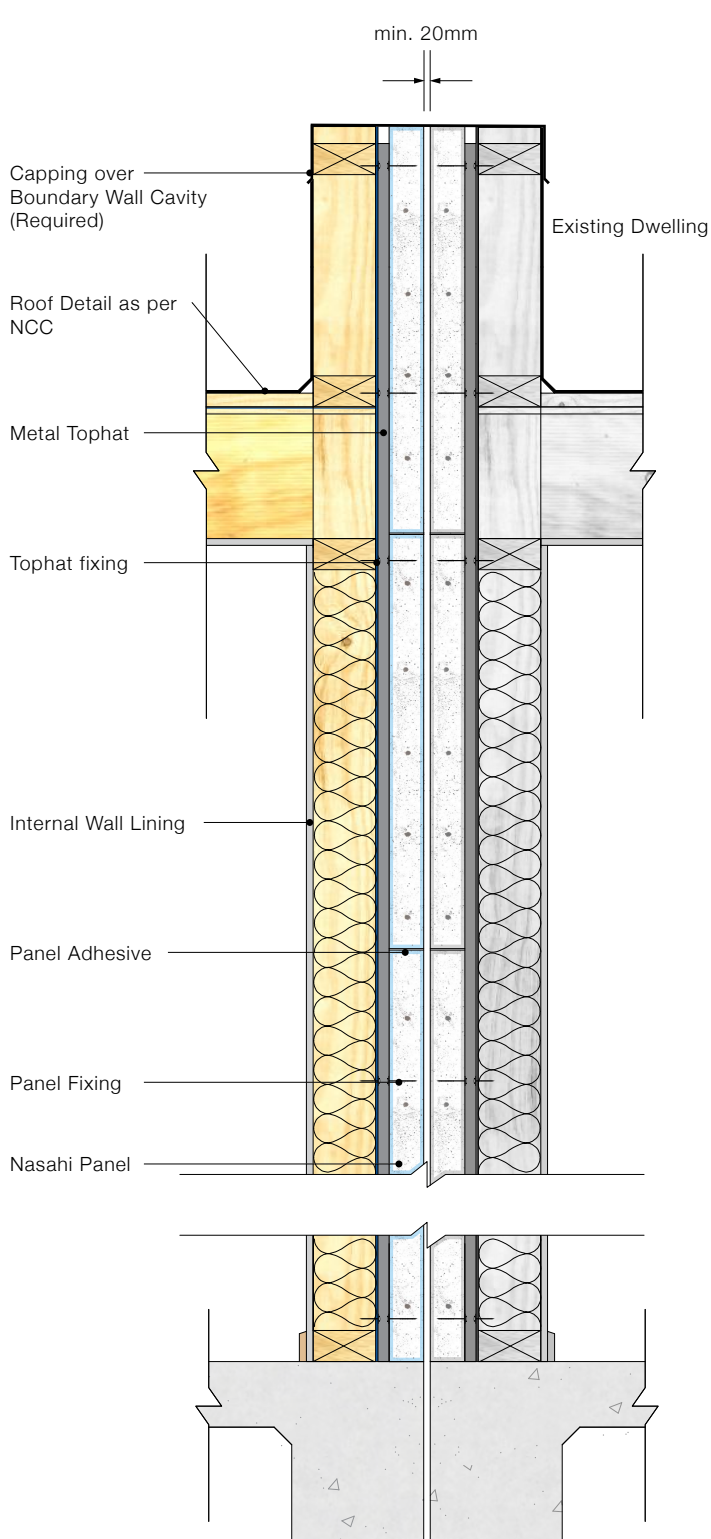


DETAIL 13.1 - Boundary Wall Detail
(Even Slab)

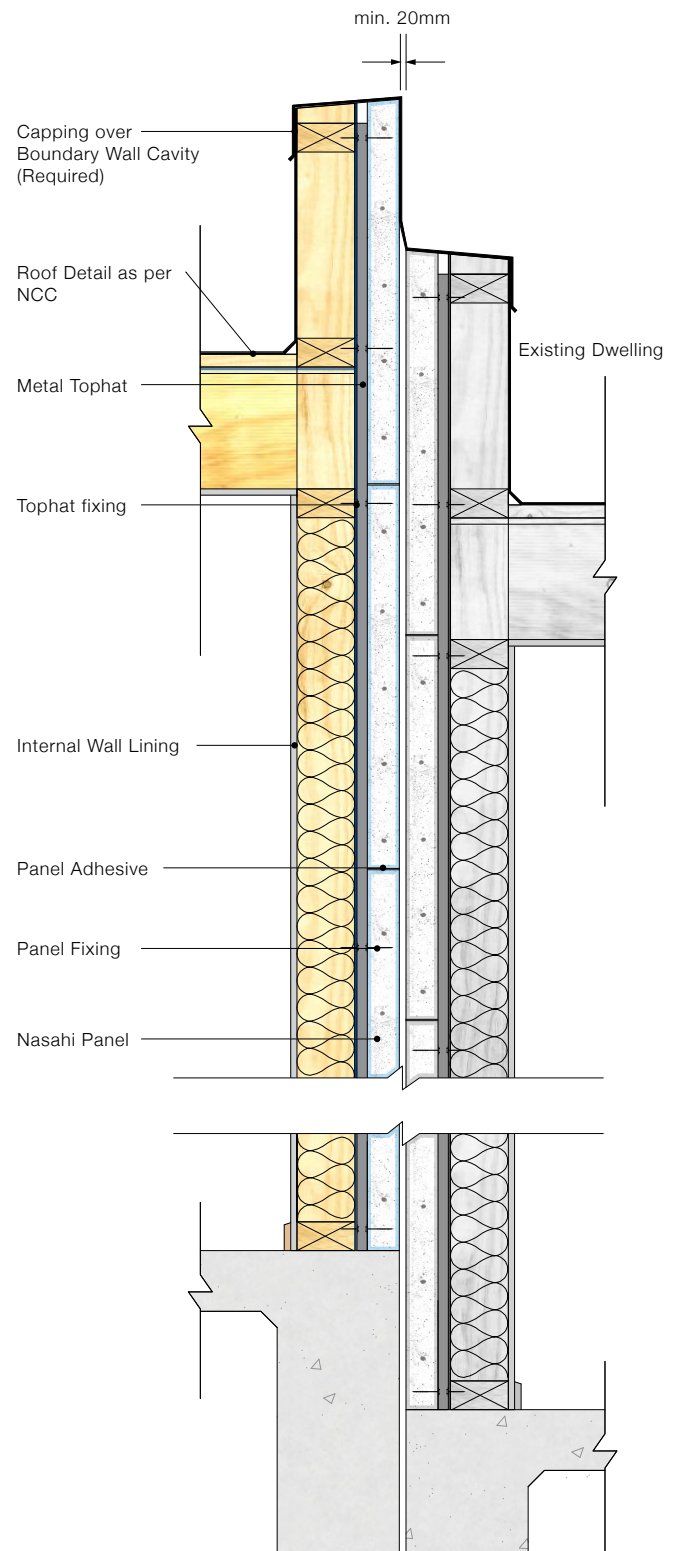


DETAIL 13.2 - Boundary Wall Detail
(Uneven Slabs)





DETAIL 13.3 - Boundary Wall Detail
(Even Slab, Without Slab Rebate)



DETAIL 13.4 - Boundary Wall Detail
(Uneven Slabs, Without Slab Rebate)

