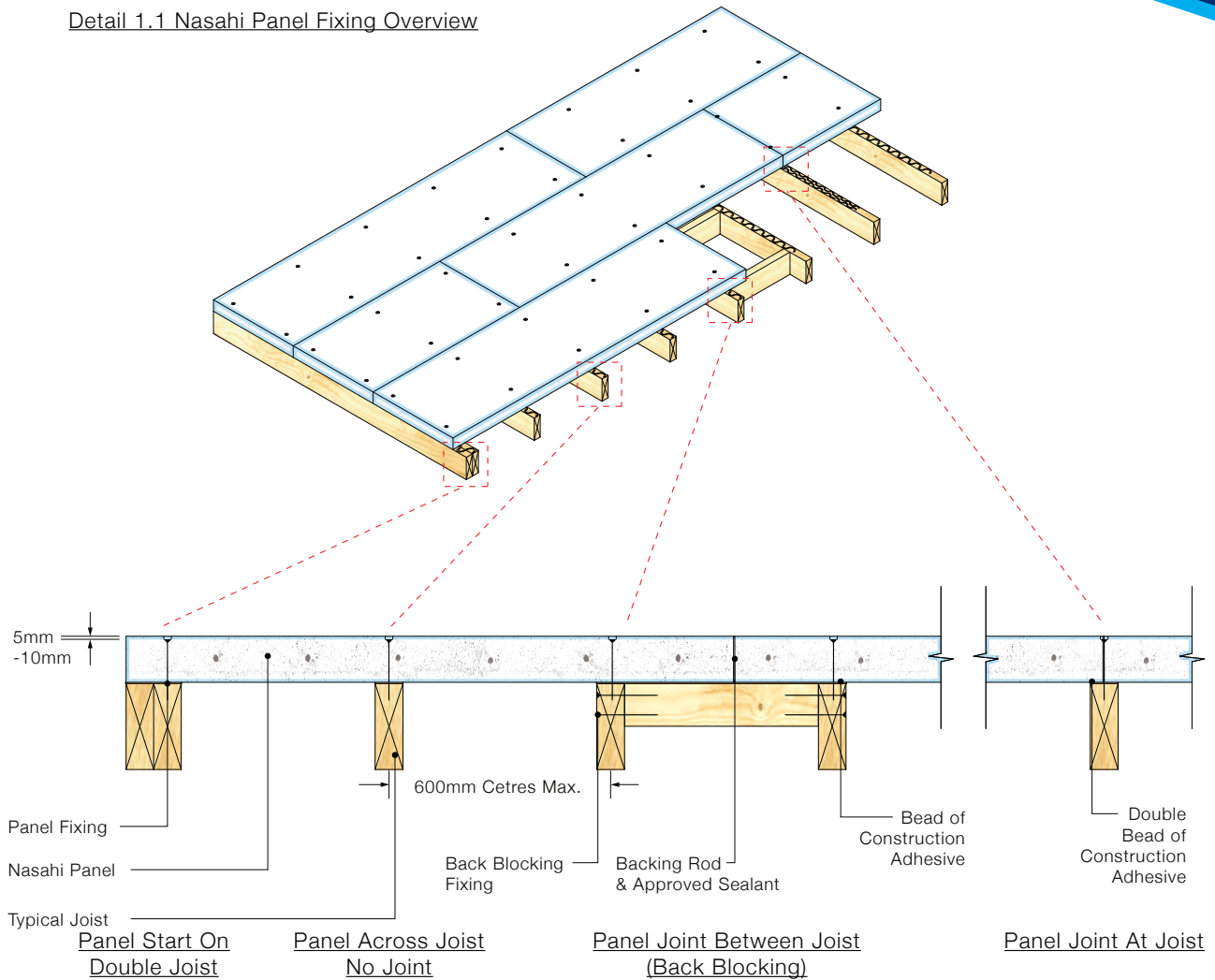
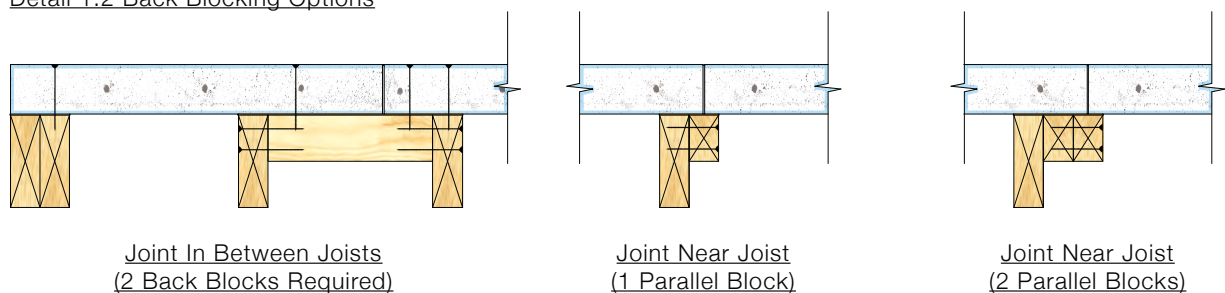




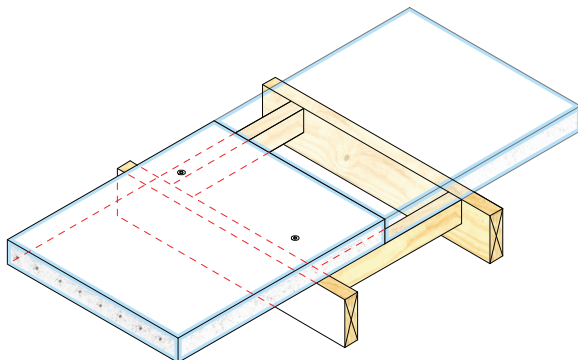
Detail 1.1 Nasahi Panel Fixing Overview

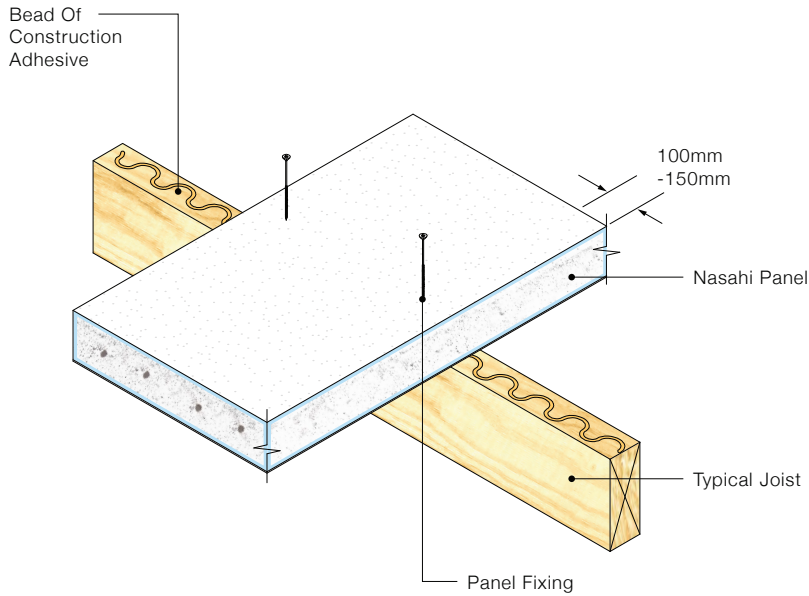


Detail 1.2 Back Blocking Options

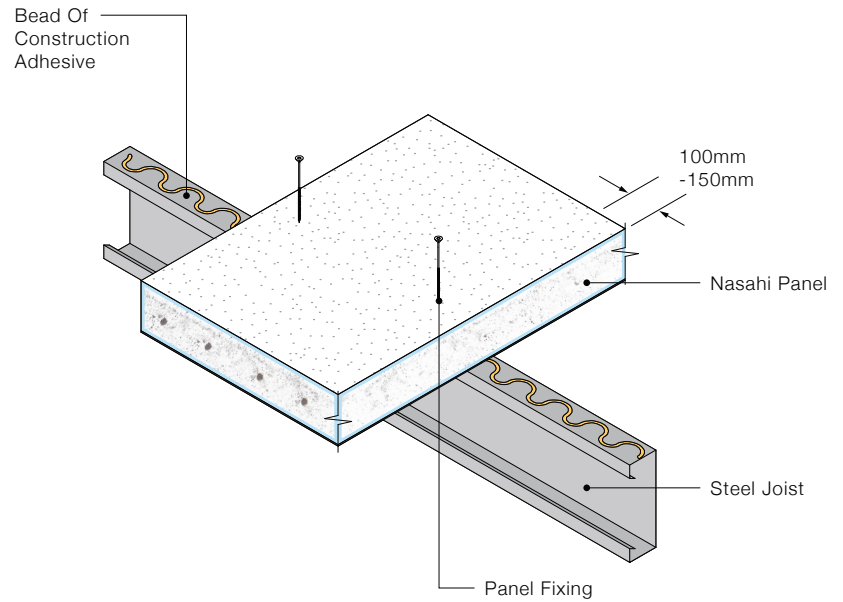


* Back Blocks Must Support Panel Corners

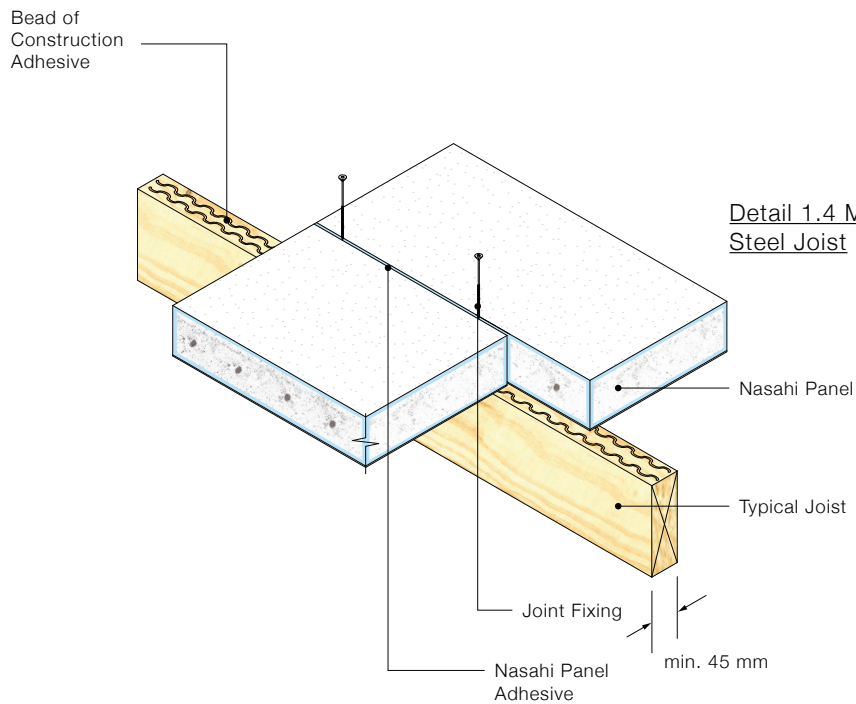




Detail 1.3 Mid Panel Fixing
Timber Joist

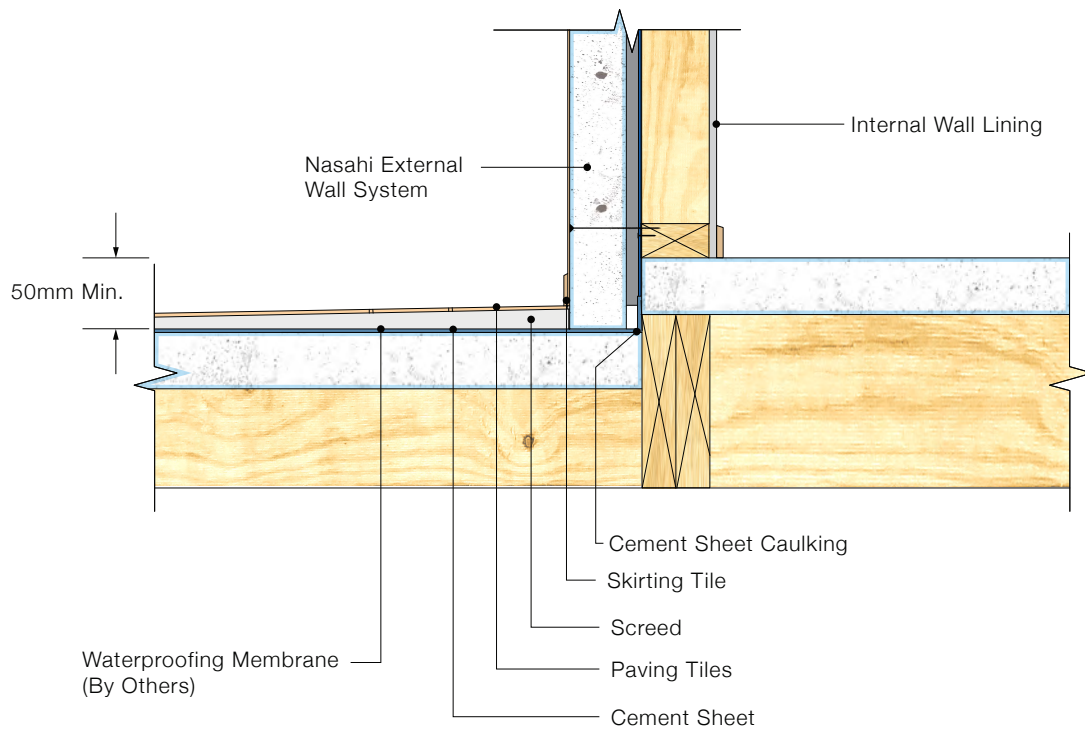


Detail 1.4 Mid Panel Fixing
Steel Joist



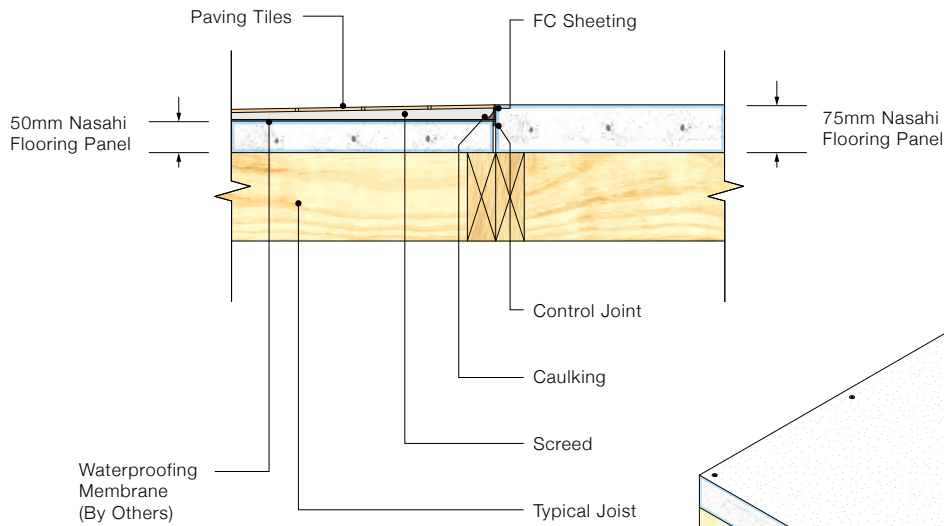
Detail 1.5 Panel Joint On Joists



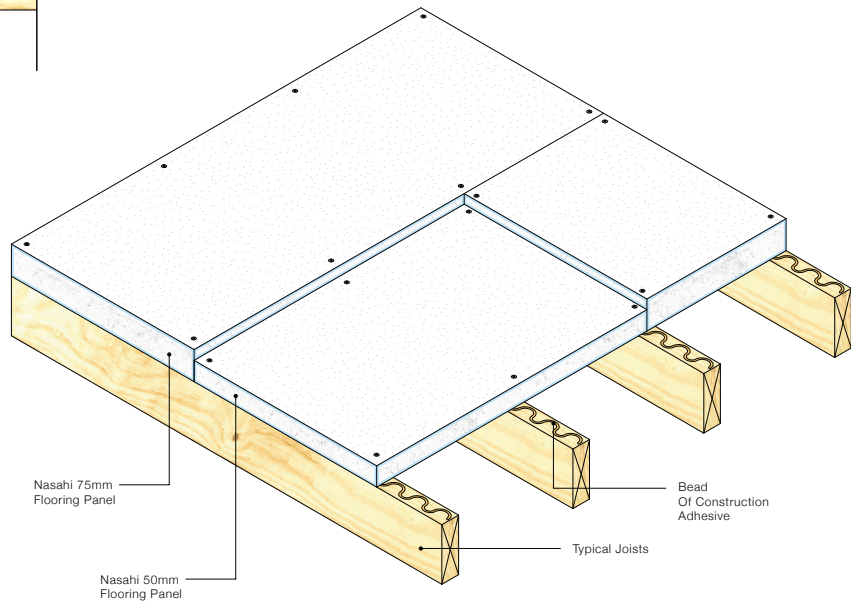


Detail 7.1 Balcony Flooring

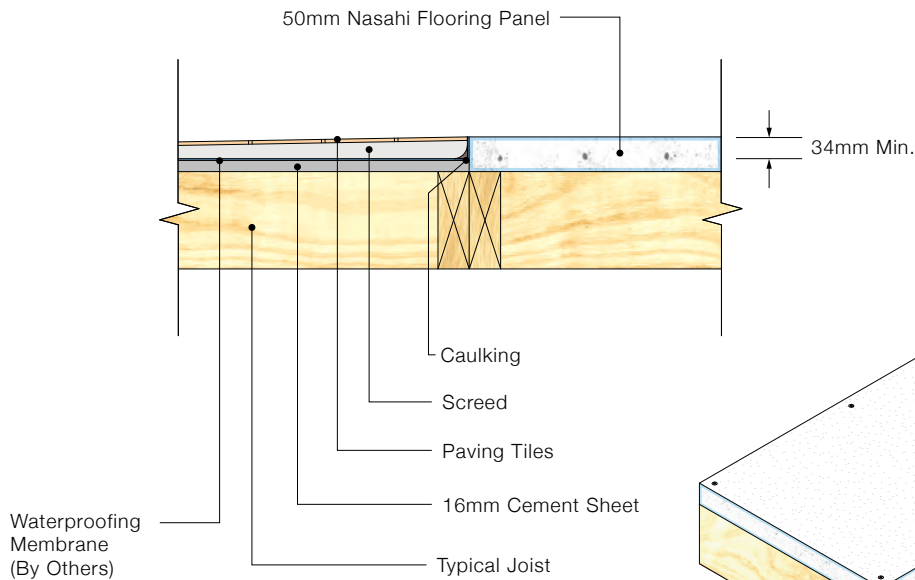




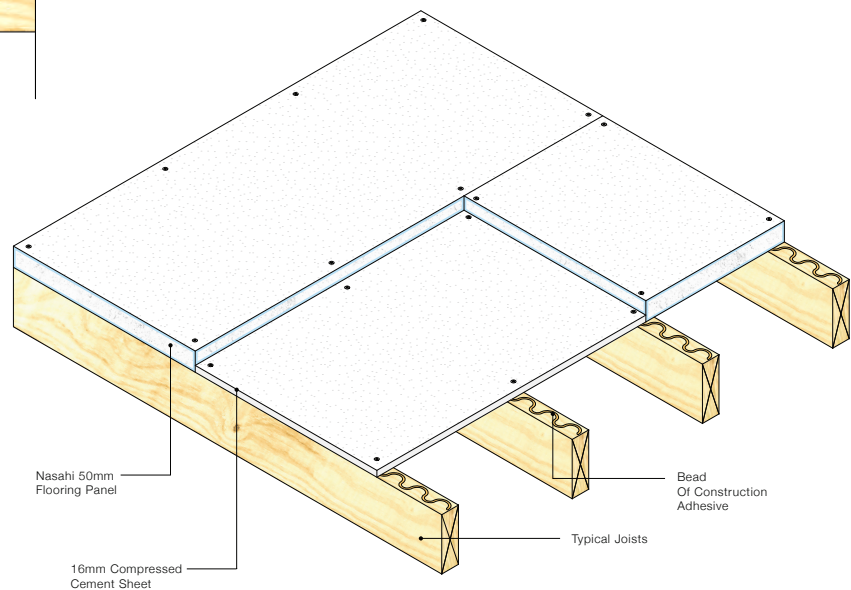
Detail 6.1a Shower Recess (75mm to 50mm)



Detail 6.1b Shower Recess Panel Layout (75mm Panel)

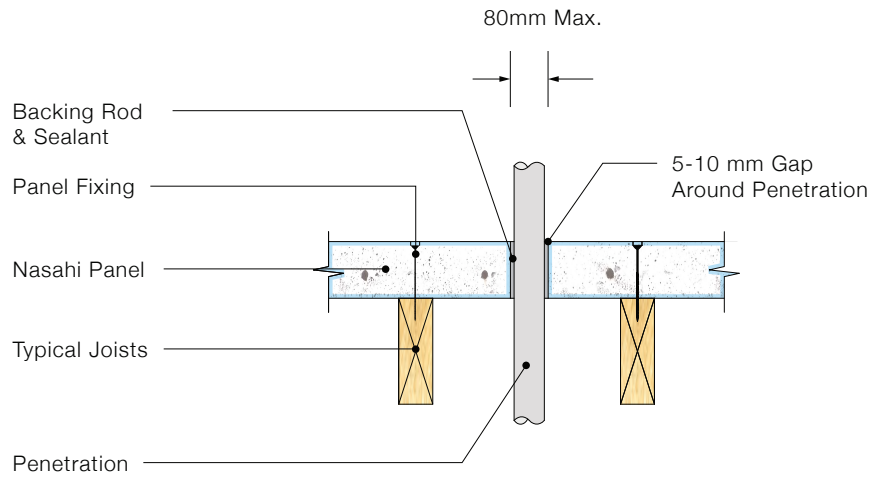


Detail 6.2a Shower Recess (50mm)

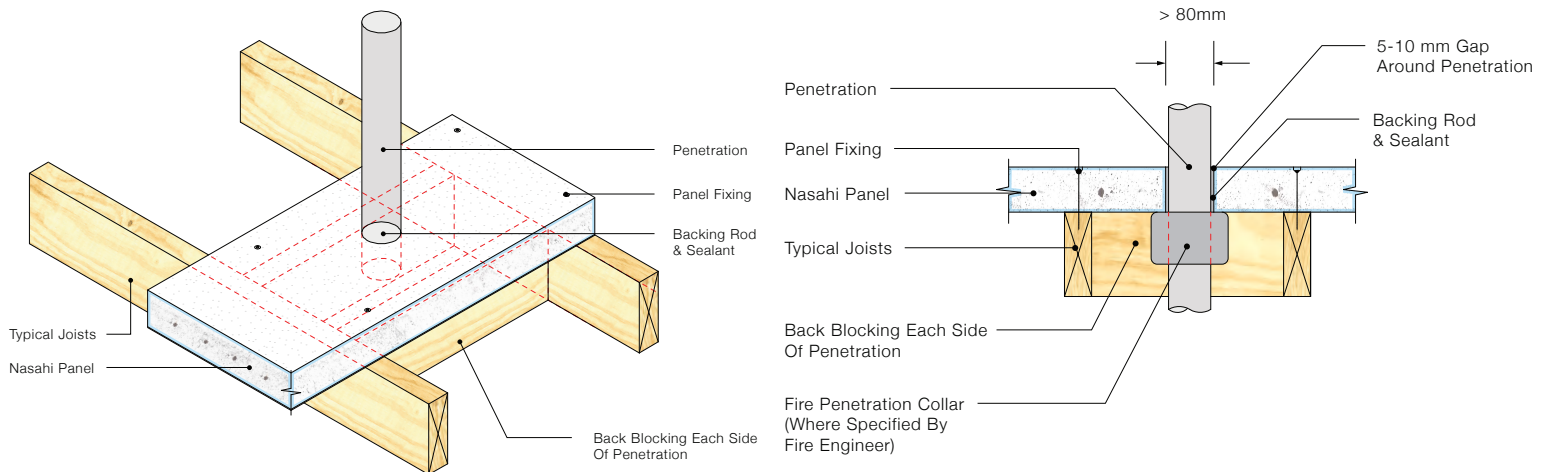


Detail 6.2b Shower Recess Panel Layout (50mm Panel)

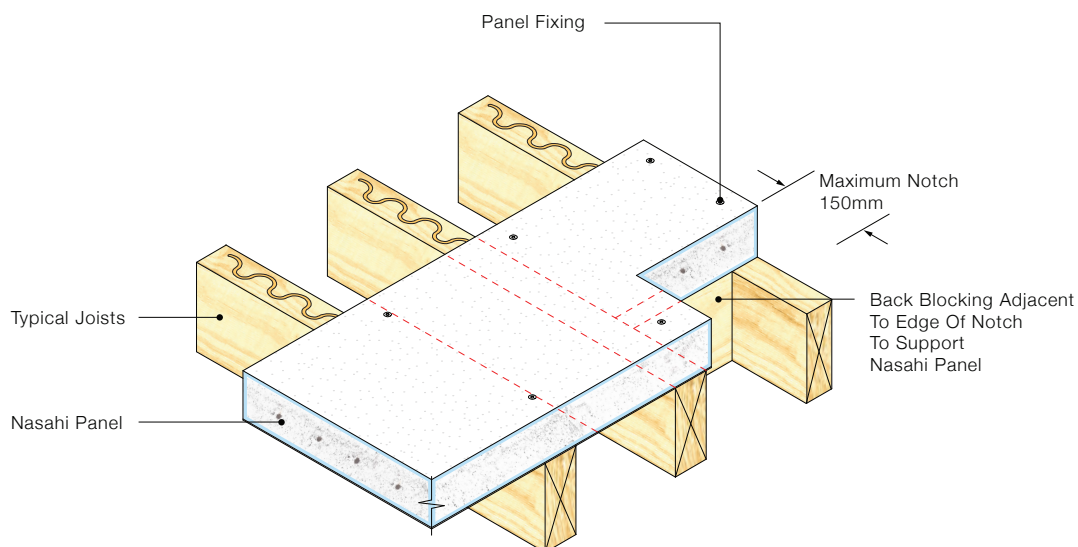




Detail 5.1 Typical Penetration
(Smaller Than 80mm)

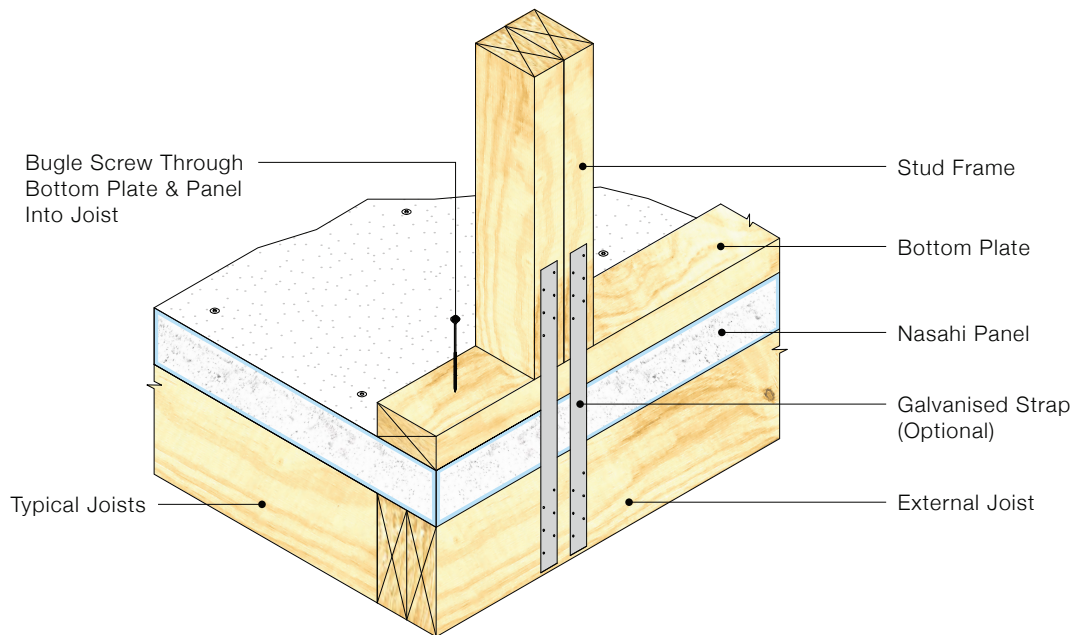


Detail 5.2 Typical Penetration
(Back Blocking)



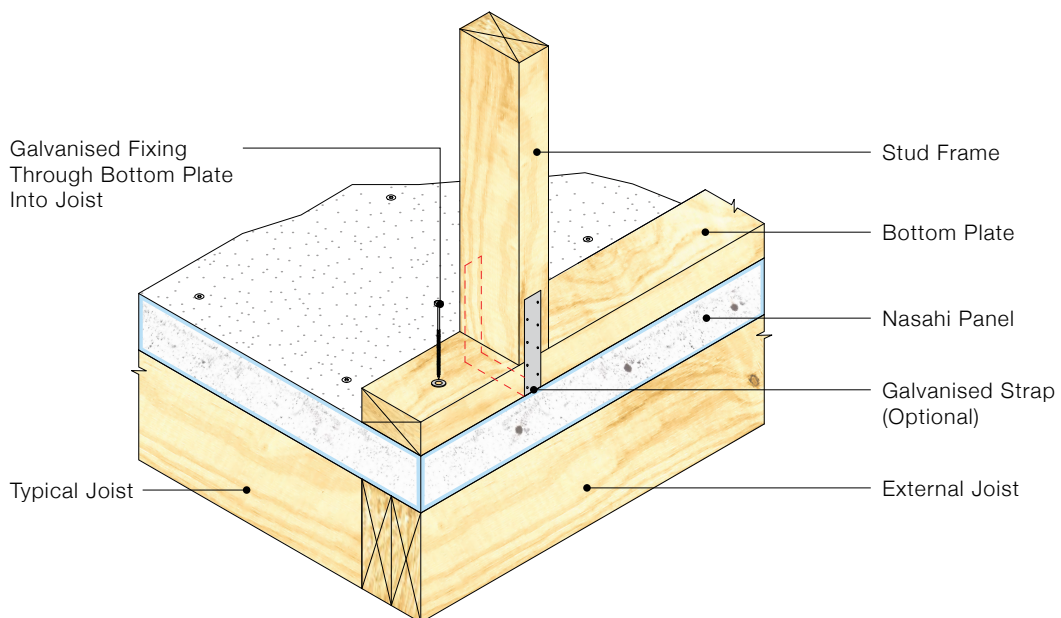
Detail 5.3 Panel Support Detail For Corner Notching





Detail 4.1 External Wall Frame Fixing

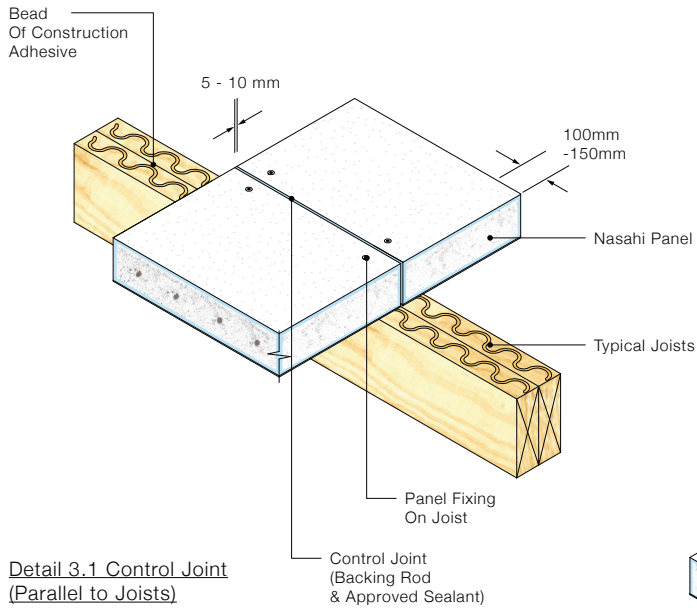
- Loadbearing Walls Must Be Supported By Joist Under Panel. Check With Project Engineer For Maximum Panel Loads.



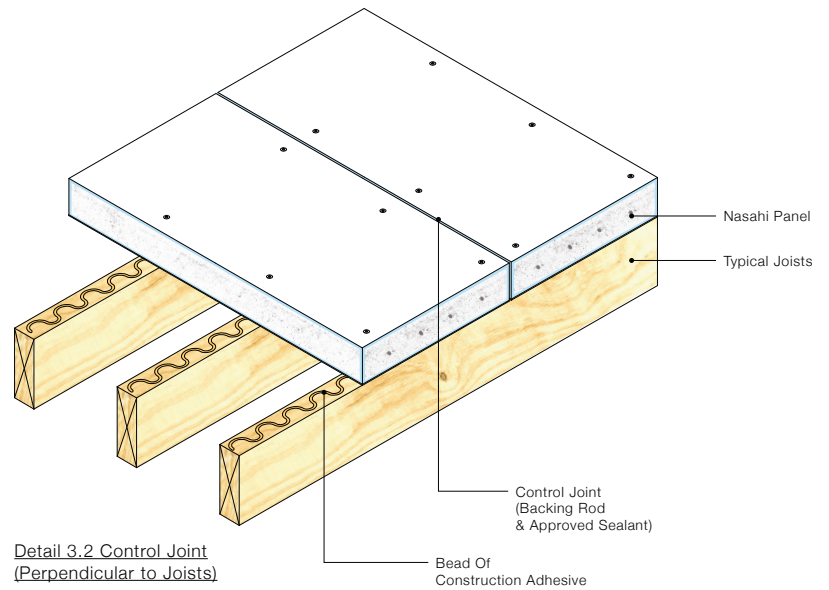
Detail 4.2 External Wall Frame Fixing (Bolt Fixing)

- Loadbearing Walls Must Be Supported By Joist Under Panel. Check With Project Engineer For Maximum Panel Loads.

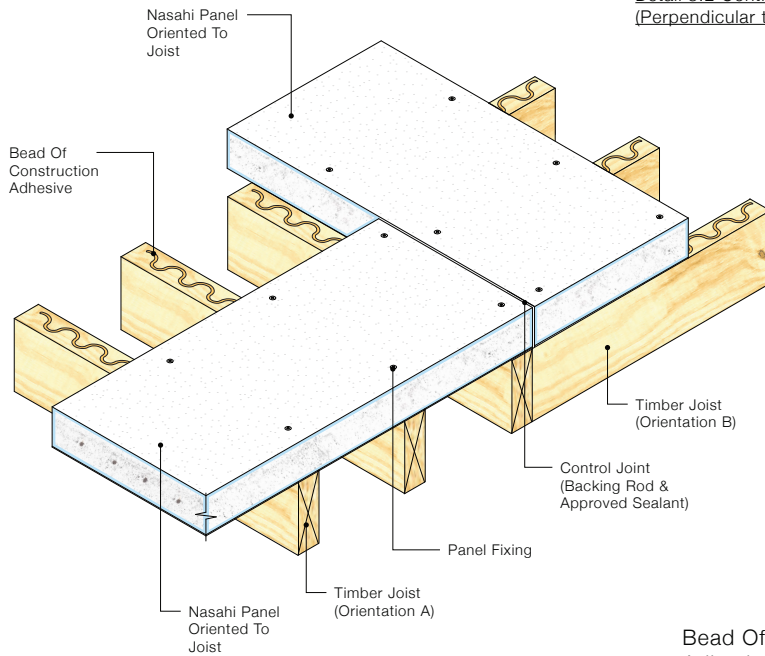




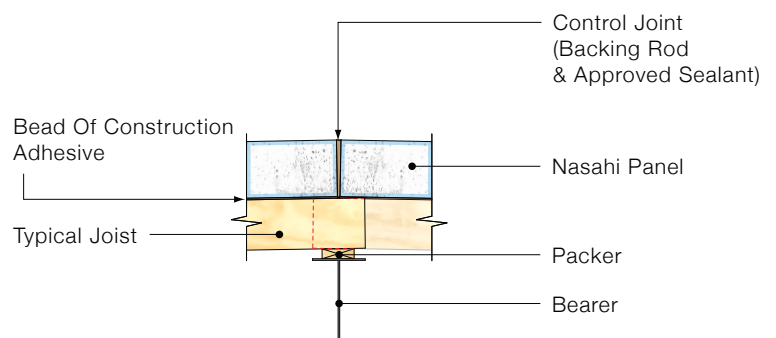
Detail 3.1 Control Joint (Parallel to Joists)



Detail 3.2 Control Joint (Perpendicular to Joists)

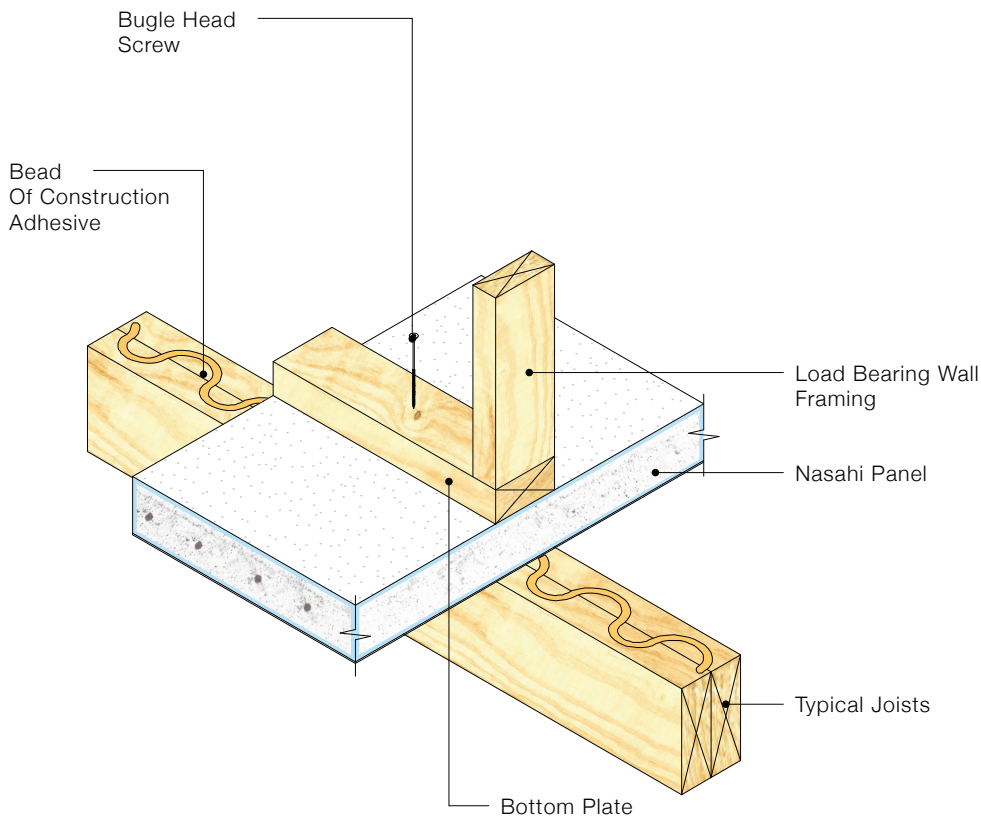


Detail 3.3 Control Joint At Change Of Joist Direction

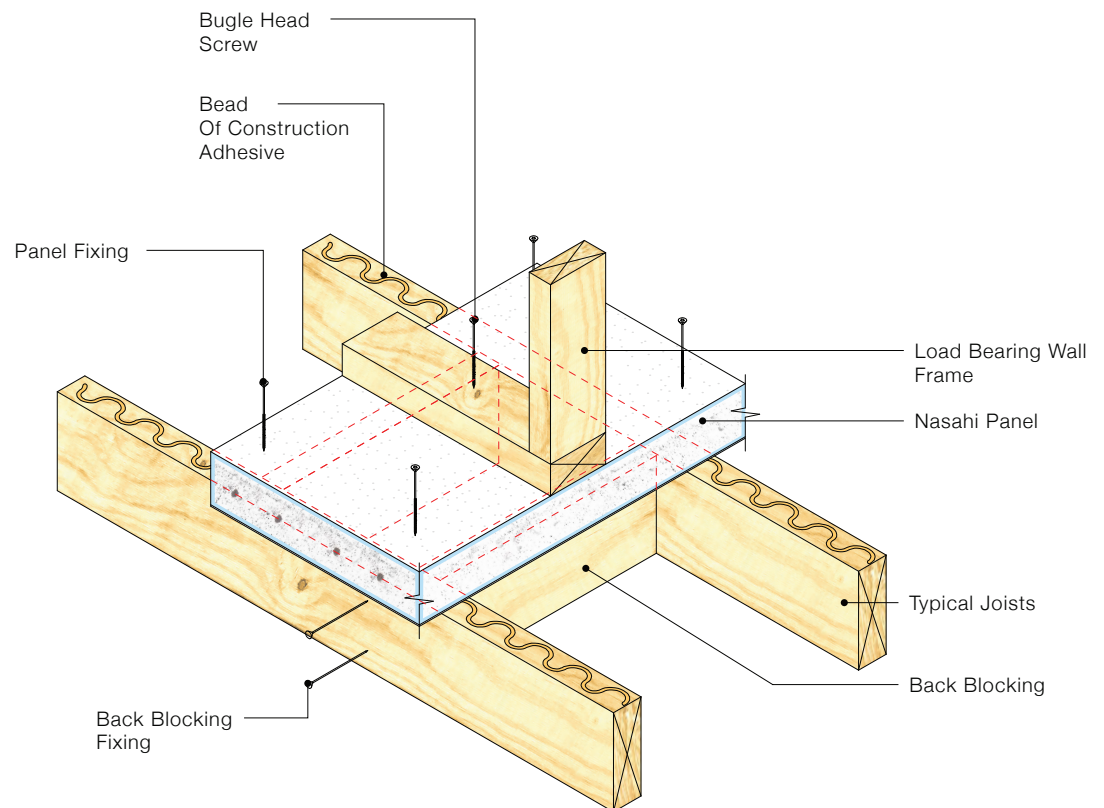


Detail 3.4 Control Joint Over Bearer / Support Wall





Detail 2.1 Load Bearing Wall Option 1:
Floor Joist Under Loadbearing Wall



Detail 2.2 Load Bearing Wall Option 2:
Back Blocking Under Loadbearing Walls

