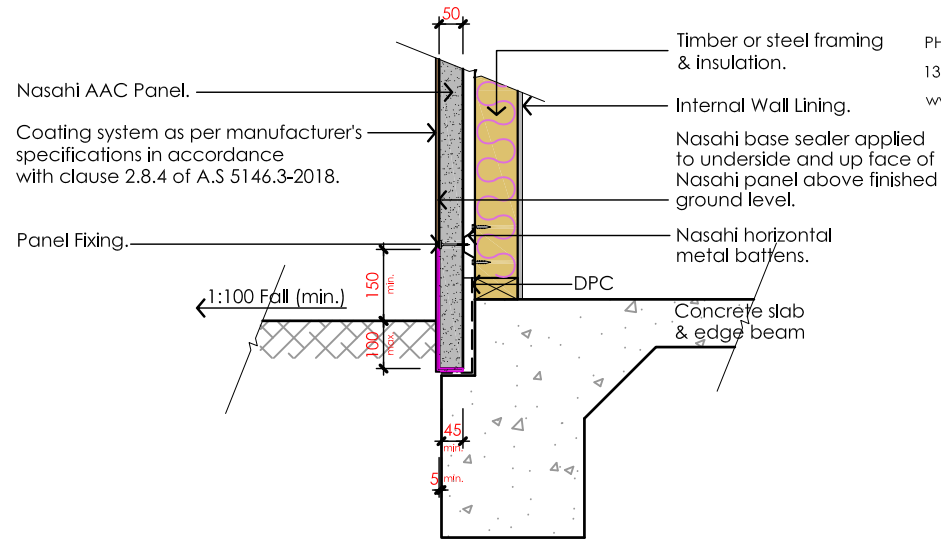


Base Panel Detail (50mm)

Below finish concrete path

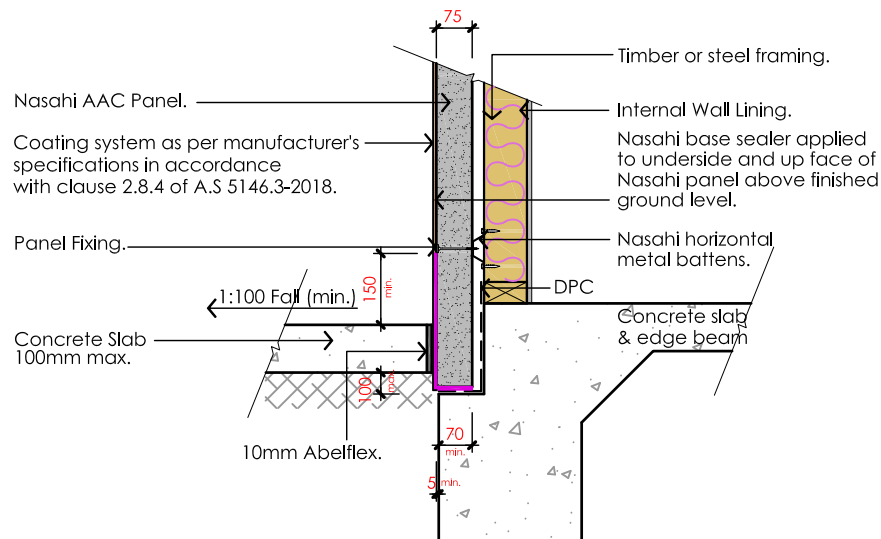


Base Panel Detail (50mm)

Below finish ground

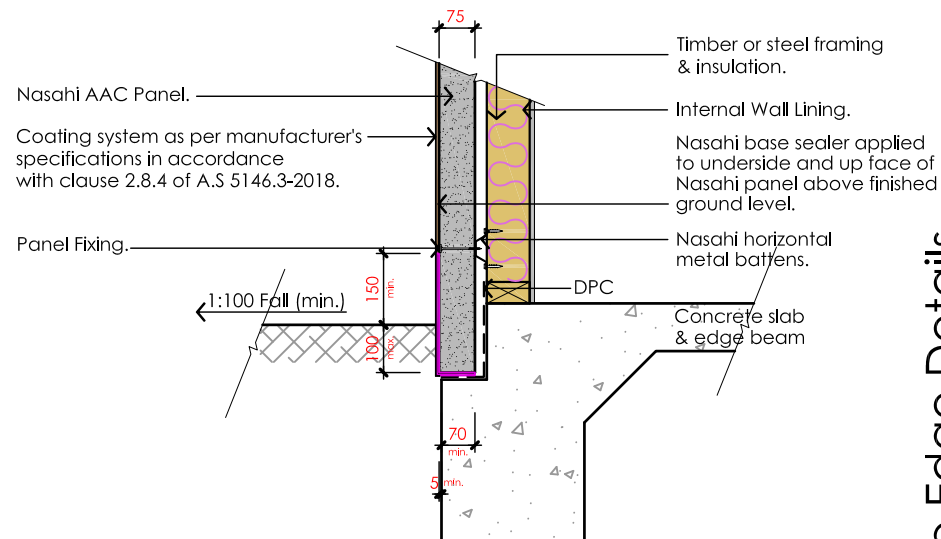
NOTE:

This slab edge detail does not comply with the termite visible inspection zone requirements. It is the responsibility of the builder to ensure chemical barrier in accordance with A.S.3660 is installed or other suitable termite protection system is adopted.



Base Panel Detail (75mm)

Below finish concrete path



Base Panel Detail (75mm)

Below finish ground

Slab Edge Details

Revision: _____

Scale: 1:50 / A4

Drawn By: S.M

Approved By: M.G

Detail No. 1.1

Date Printed: 29/05/2023